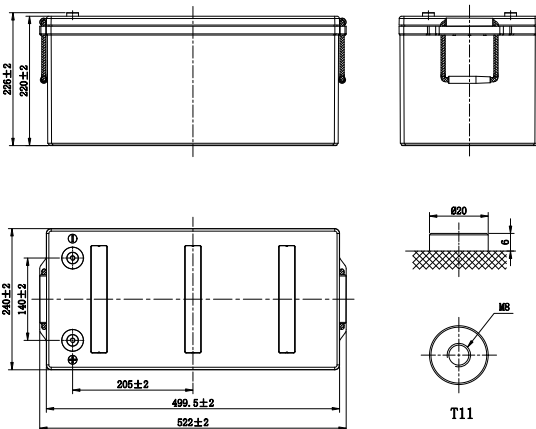


LP SERIES-GENERAL PURPOSE

LP12-200 (12V200Ah)



CHARACTERISTICS

Item	Specifications	
Rated Voltage	12V	
Nominal Capacity (25°C)	C ₁₀ , 1.80V/cell	200Ah
Dimension	Length	522mm (20.6inches)
	Width	240mm (9.45inches)
	Container Height	220mm (8.66inches)
	Total Height	226mm (8.90inches)
Approx Weight	59.0kg (130.1lbs)	
Terminal	T11(M8)	
Container Material	ABS (UL94 HB or V-0 optional)	
Short-circuit current	3600A	
Internal Resistance (25°C)	Approx 3.2 mΩ (Fully charged)	
Operating Temp. Range	Discharge	-15~50°C (5~122°F)
	Charge	-20~40°C (-4~104°F)
	Storage	-15~40°C (5~104°F)
Nominal Operating Temp. Range	25±3°C (77±5°F)	
Max. Charging Current (25°C)	0.3C	
Charge voltage (25°C)	Standby Use	Cycle Use
	2.25-2.30V/cell	2.35-2.40V/cell
Temp. Coefficient	-3mV/cell/°C	-5mV/cell/°C
	40°C (104°F)	103%
Effect of temp. to Capacity	25°C (77°F)	100%
	0°C (32°F)	86%
	≤3% per month at 25°C (77°F). LP series batteries may be stored up to 6 months at 25°C (77°F) and then a refreshing charge is required. For higher temperatures the time interval will be shorter.	
Self Discharge		

DISCHARGE TABLE

Constant Current Discharge (Amperes) at 25°C (77°F)																
F.V/Time	5min	10min	15min	20min	30min	45min	1h	1.5h	2h	3h	4h	5h	6h	8h	10h	20h
1.85V/cell	328.7	278.4	240.0	204.6	154.8	115.1	98.3	80.2	60.1	45.3	36.8	31.3	27.2	22.1	18.9	10.0
1.80V/cell	372.4	343.9	282.4	235.8	179.5	133.9	109.6	82.9	65.5	50.1	39.8	33.6	29.2	23.4	20.0	10.4
1.75V/cell	403.2	377.8	302.0	250.2	189.2	139.0	110.5	87.1	68.0	51.0	40.9	34.5	30.0	23.8	20.2	10.5
1.70V/cell	428.2	411.8	322.5	264.0	196.4	144.5	118.0	88.9	70.7	52.4	41.8	35.3	30.6	24.2	20.4	10.7
1.67V/cell	454.0	444.4	342.9	281.4	204.6	148.1	121.8	90.2	72.7	54.7	43.3	36.3	31.3	24.7	20.8	10.8
1.60V/cell	489.0	476.4	366.7	297.6	216.0	154.4	126.0	91.5	75.1	56.4	44.6	37.3	32.0	25.1	21.0	10.9
Constant Power Discharge (Watts/cell) at 25°C (77°F)																
F.V/Time	5min	10min	15min	20min	30min	45min	1h	1.5h	2h	3h	4h	5h	6h	8h	10h	20h
1.85V/cell	721.2	514.3	447.8	385.7	295.0	221.3	185.5	155.5	116.6	88.3	71.9	61.3	53.5	43.6	37.4	20.0
1.80V/cell	806.9	627.7	519.9	438.0	336.9	255.4	206.7	160.0	126.4	96.1	77.3	65.5	57.2	46.1	39.5	20.6
1.75V/cell	861.1	678.7	549.2	460.2	352.2	262.5	215.2	167.4	130.6	98.5	79.1	67.2	58.6	46.8	39.9	20.7
1.70V/cell	905.3	723.0	578.2	482.0	363.5	272.0	221.3	170.0	135.6	101.0	80.9	68.6	59.7	47.4	40.2	21.1
1.67V/cell	920.0	773.1	610.1	509.9	375.7	276.3	227.2	171.6	138.5	104.9	83.4	70.2	60.8	48.4	41.0	21.4
1.60V/cell	932.9	809.8	641.7	533.4	393.8	286.4	234.0	173.0	142.5	107.6	85.6	72.0	61.9	49.0	41.4	21.5

LP SERIES-GENERAL PURPOSE

LP12-200 (12V200Ah)



APPLICATIONS

- All purpose
- Uninterruptable Power Supply (UPS)
- Electric Power System (EPS)
- Emergency backup power supply
- Alarm and security system
- Communication power supply
- DC power supply
- Auto control system

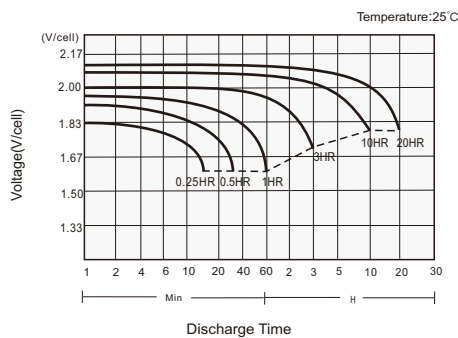
GENERAL FEATURES

- 10 years design life (25°C)
- Lead calcium alloy, sealed design, no watering required
- Puncture resistant micro-porous glass mat separators extend life
- Unique technology optimizes power capacity, cell consistency, and long-term reliability
- Designed for a wide range of applications

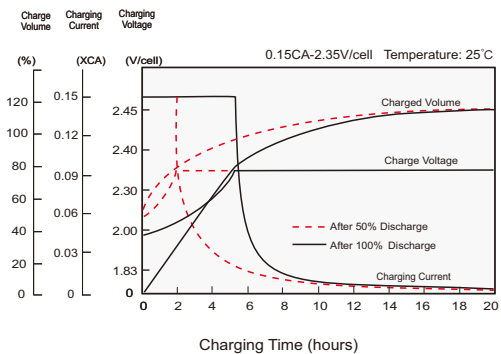
STANDARDS

- Compliance with IEC 60896 standards, EU Battery Directive
- UL, CE Approved
- Manufactured in Leoch@IATF 16949, ISO 45001, ISO 9001 and ISO 14001 certified production facilities

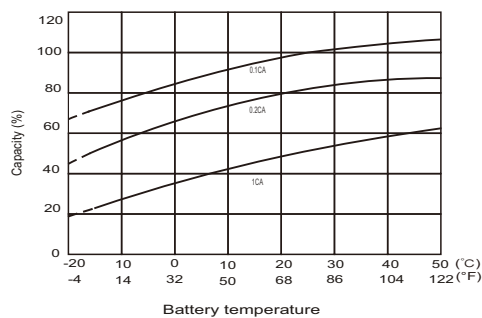
Discharge Characteristics



Charging Characteristics



Effects of Temperature on Capacity



Self Discharge Characteristics

